

Peartree Hill Solar Farm

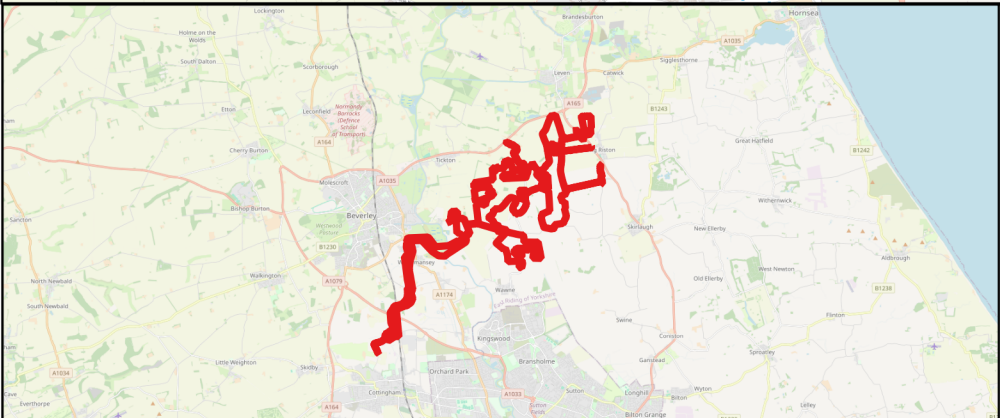
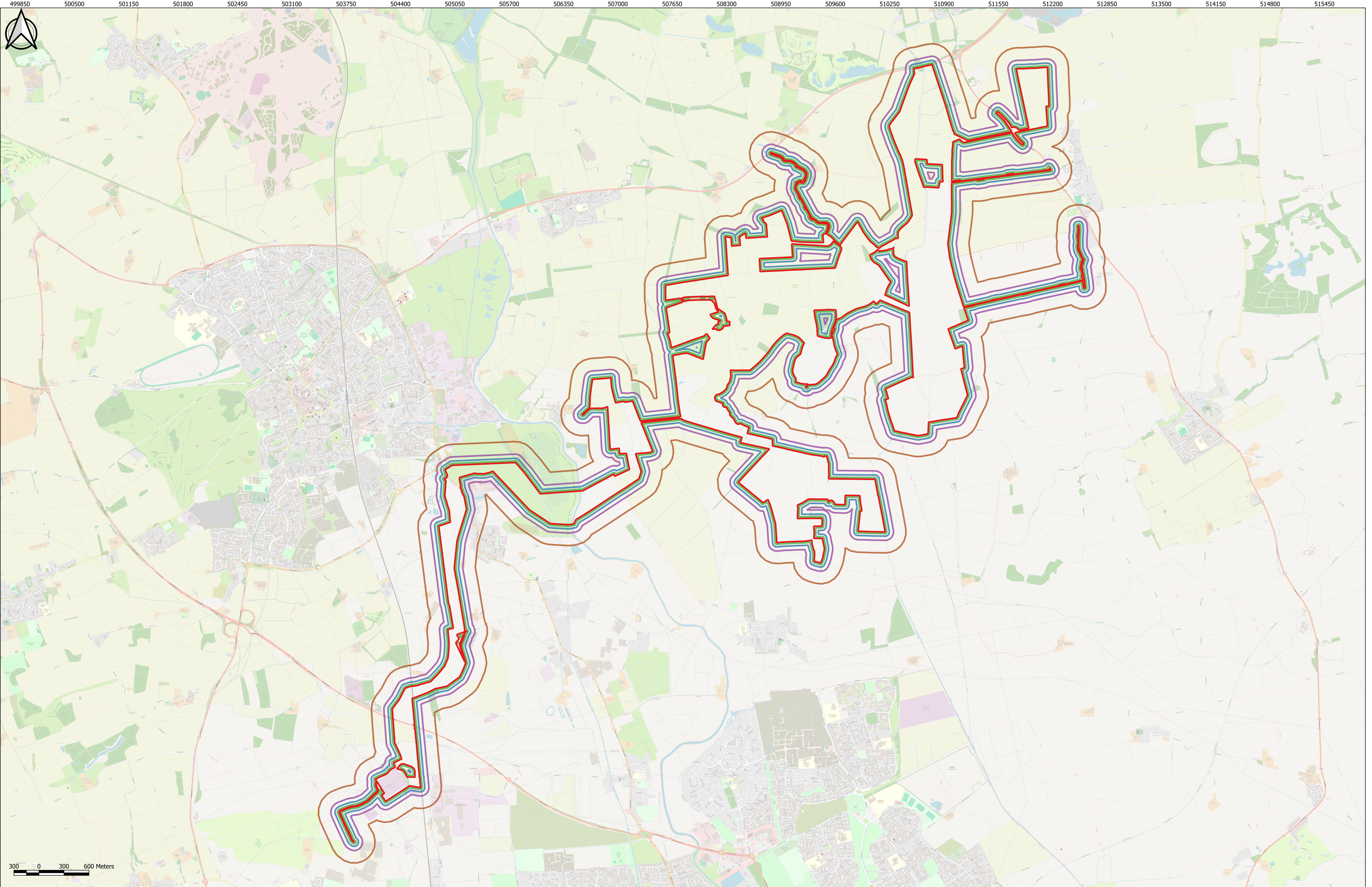
Environmental Statement

Volume 3

Figure 6.1: Demolition (During Decommissioning Phase)/ Earthworks/ Construction Activities Study Areas

Application Document Ref: EN010157/APP/6.3
February 2025

Planning Act 2008
Infrastructure Planning
(Applications: Prescribed Forms
and Procedure) Regulations 2009 –
Regulation 5(2)(a)



Key

- Order Limits
- 20m Study Area (For Demolition (During Decommissioning Phase)/Earthworks/Construction Activities)
- 50m Study Area (For Demolition (During Decommissioning Phase)/Earthworks/Construction Activities)
- 100m Study Area (For Demolition (During Decommissioning Phase)/Earthworks/Construction Activities)
- 250m Study Area (For Demolition (During Decommissioning Phase)/Earthworks/Construction Activities)

The Base mapping is based upon Ordnance Survey (OS) data. Reproduced by permission of Ordnance Survey on behalf of HMSO. © Crown copyright and database right 2024. All rights reserved. Ordnance Survey licence number 0100031673

Notes:

P01	29/01/2025	PC	SS	LY	SS
App	Date	By	Chkd	Appd	Authd

Client

RWE

Designer

RSK

Project Name
Peartree Hill Solar Farm

Drawing Title
Environmental Statement Volume 3, Figure 6.1: Demolition (During Decommissioning Phase)/Earthworks/Construction Activities Study Areas

Scale at A1
1:35000

Status
DCO Application

Coordinate System:
British National Grid

PINS Number
EN010157/APP/6.3

Rev
P01

RWE Renewables UK Limited

Windmill Hill Business Park,
Whitehill Way,
Swindon,
Wiltshire,
England,
SN5 6PB
www.rwe.com